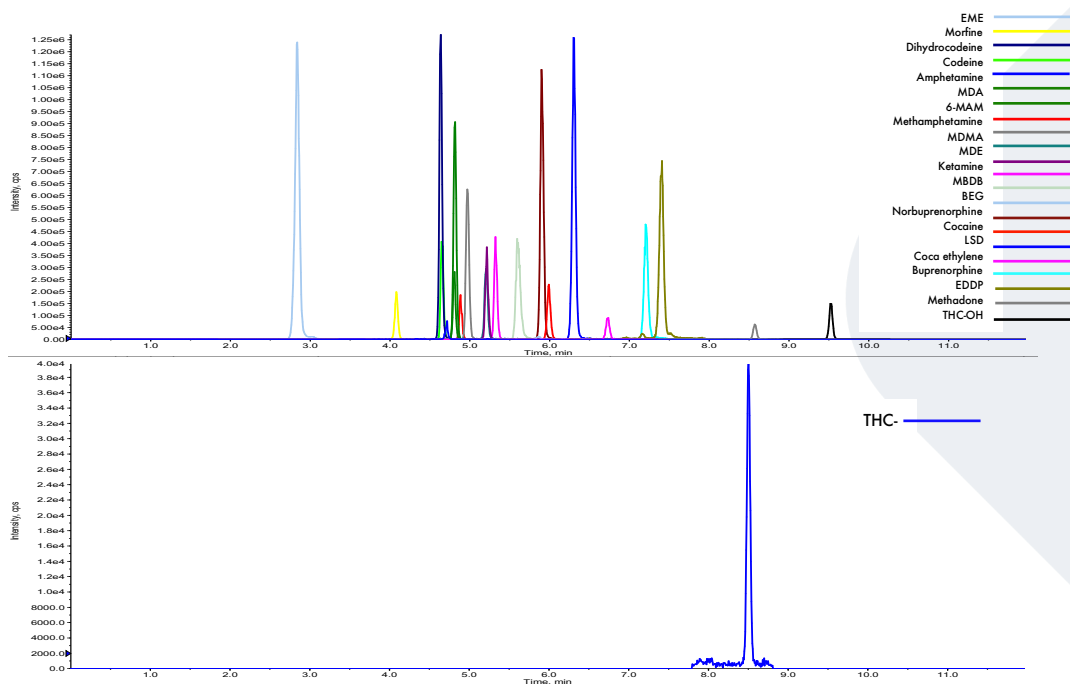


FLOMASS[®] DRUGS OF ABUSE IN WHOLE BLOOD

Our panel of drug of abuse in whole blood includes Amphetamine, Methamphetamine, MDA, MDE, MDMA, MBDB, Benzoyllecgonine, Cocaine, Coca ethylene, Morphine, Codeine, Dihydrocodeine, 6-MAM, THC, 11-OH-THC, THC-COOH, Methadone, EDDP, Buprenorphine, Norbuprenorphine, Ketamine, LSD.



HPLC-MS/MS system conditions

Ionization: ESI positive mode, except THC-COOH analyzed in negative mode

MS/MS: specific MRM

Injection volume: 15 µL (variable according to instrumental sensitivity)

Running time: 12 min

Column heater: 31°C

Column conditioning: column should be conditioned for 5 min at the chromatographic gradient initial condition. Then run 3 blank injections (MPA only) using the gradient as indicated on IFU

Sample preparation

- Prepare a mix composed of 100 µL of Buffer Solution + 20 µL of Internal Standards Mix per sample
 - Pipette in each vial 120 µL of the mix prepared in the previous step of the procedure
 - Add to each vial 100 µL of whole blood and rinse out the tip several times
 - Vortex and incubate for 5 min at room temperature
 - Add gently 600 µL Precipitant Solution
 - Vortex for 30 sec
 - Centrifuge at 12000 rpm for 12 min
 - Transfer the supernatant into another vial and dilute it with Diluent Solution with a 1:2 ratio
- Transfer into an autosampler vial with plastic adapter and analyze with HPLC-MS/MS technique

Performance

ANALYTE	LINEARITY (pg/mg)	LLOD (pg/mg)	LLOQ (pg/mg)	ANALYTE	LINEARITY (pg/mg)	LLOD (pg/mg)	LLOQ (pg/mg)
Amphetamine	4.57 - 202	1.37	4.57	Dihydrocodeine	0.687 - 333	0.206	0.687
Methamphetamine	4.98 - 340	1.49	4.98	6-MAM	0.534 - 404	0.160	0.534
MDA	3.58 - 385	1.07	3.58	THC	0.758 - 65.6	0.227	0.758
MDE	6.21 - 380	1.86	6.21	THC-OH	0.733 - 60.8	0.220	0.733
MDMA	1.80 - 273	0.540	1.80	THC-COOH	0.672 - 57.2	0.202	0.672
MBDB	3.65 - 404	1.10	3.65	Methadone	2.90 - 375	0.870	2.90
Cocaine	1.95 - 367	0.477	1.59	EDDP	0.818 - 350	0.245	0.818
BEG	2.21 - 390	0.663	2.21	Buprenorphine	0.379 - 69.6	0.114	0.379
EME	0.547 - 404	0.164	0.547	Norbuprenorphine	1.05 - 74.0	0.315	1.05
Coca ethylene	0.821 - 400	0.246	0.821	Ketamine	3.73 - 484	1.12	3.73
Morphine	2.00 - 488	0.600	2.00	LSD	0.106 - 9.08	0.032	0.106

Ordering guide

EUM08100	FloMass® Drugs of Abuse in Whole Blood	100 assays
EUM08042	6-Levels Calibrators, lyophil.	3 x 6 x 0.6 mL
EUM08055	2-Levels Controls, lyophil.	3 x 2 x 0.6 mL
EUM00C02	Chromatographic Column	1 pc
EUM00A04	Precolumn	4 pcs

CHR-07-19-REV.3